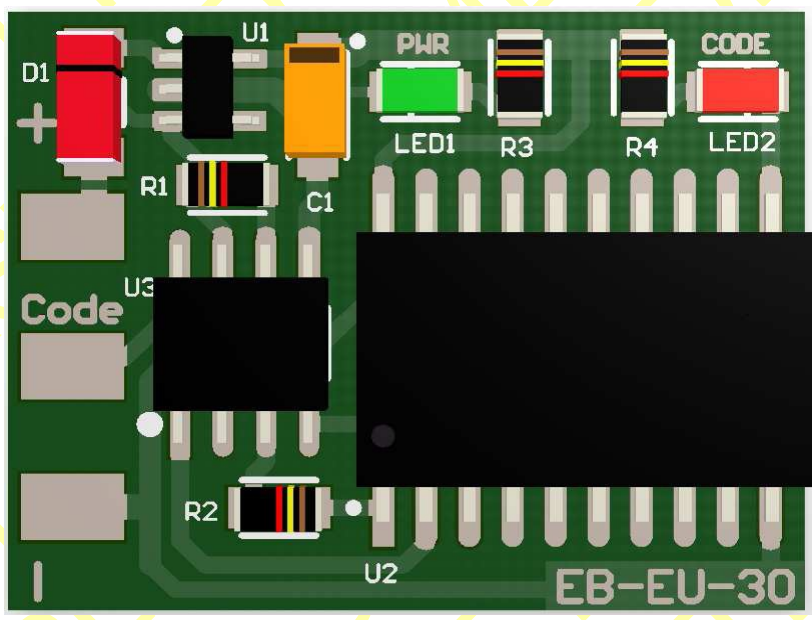




**MEDBIOPLAST LTD**

# **EMULATOR IMMO MERCEDES CR**



**Infrared immo, pyxis 12 pin + 2 pin  
CAN but only occupied L (H CAN  
empty) LEDs green and red are  
flashing in the mirror.**

**2,2 Diesel Lucas 1 plug**

**1,8 - 2,0 - 2,3 gasoline ECM hybrid**

**SIEMENS**

**Thank you for purchasing our device.**

**Emulator immo to Mercedes cars replaces  
damaged immobilizer or the car key.**

**This device is self-learning a computer code!  
In case of losing the car keys or a car burglary,  
it enable to drive off from the road  
to the car service.**

**Due to a low cost you can leave it in the car  
instead of buying a new immo or making car  
keys duplicate.**

**Two LEDs indicating:**

**green** - power

**red** – transmission (will light up permanently).

**Mercedes E210**  
**2,2 Diesel Lucas 1 plug.**





**ECM Lucas 1 plug 55 pins.**

## Connecting emulator in ECM:

**GND** pin 19

**ACC** pin 47

**immo** pin 13 white with a green stripe

**Cut off pin 13 at the computer, and pins 5 and 6 at the immo pyxis. Connect emulator. LEDs at the mirror and at the door handle do not flashing.**

**Mercedes C 202**  
**1,8 gasoline ECM hybrid**  
**SIEMENS 0185454132**



**Connect emulator instead of infrared immo,  
pyxis 12 pin + CAN 2 pin under the feet of  
passenger.**



**GND and ACC in 12 pin plug of immobilizer:**

**GND** pin 1

**ACC** pin 9

**immo** – green wire in two pin plug of  
immobilizer.

**Cut off pin 5 and 6 at immo pyxis, then LEDs  
do not blink at the mirror.**



## **Mercedes Vito 2,0 and 2,3 gasoline ECM hybrid SIEMENS**

**ECM 2 plugs with vacuum hose,  
pyxis immo 9 pin  
open and lock by remote control.**

**Connecting in place of original immobilizer:**

<b>GND</b>	<b>pin 2 brown</b>
<b>ACC</b>	<b>pin 7 black with grey strap</b>
<b>immo</b>	<b>pin 5 blue with violet strap</b>

**Warning!!!**

**Due to possible construction changes of the cars, before connecting the device check signals by multimeter on the immobilizer plug or in ECM.**